



1 Block G North Elevation
1:200



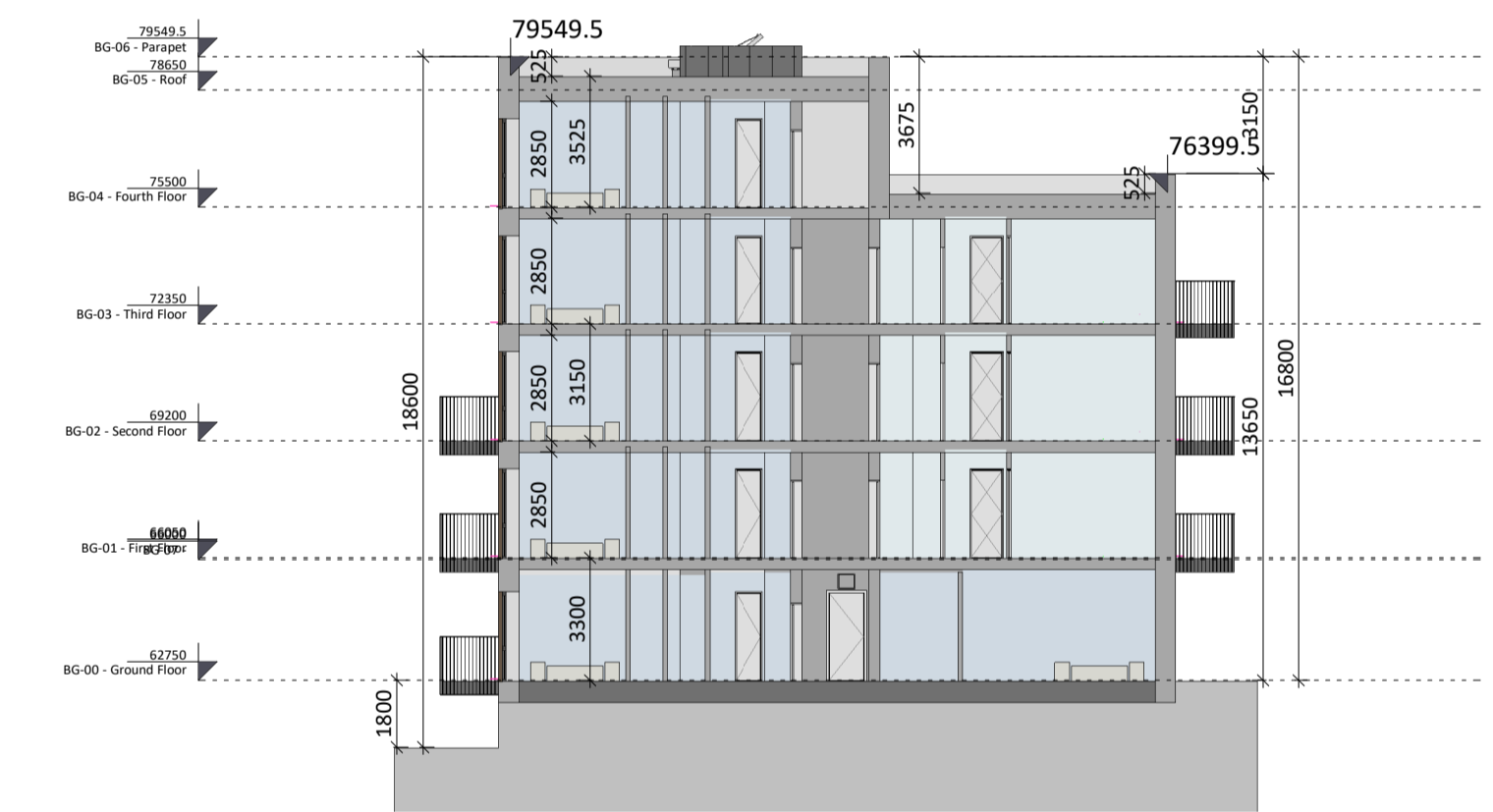
3 Block G South Elevation
1:200



2 Block G East Elevation
1:200



4 Block G West Elevation
1:200



5 BG-AA
1:200

Block G Elevations and Section

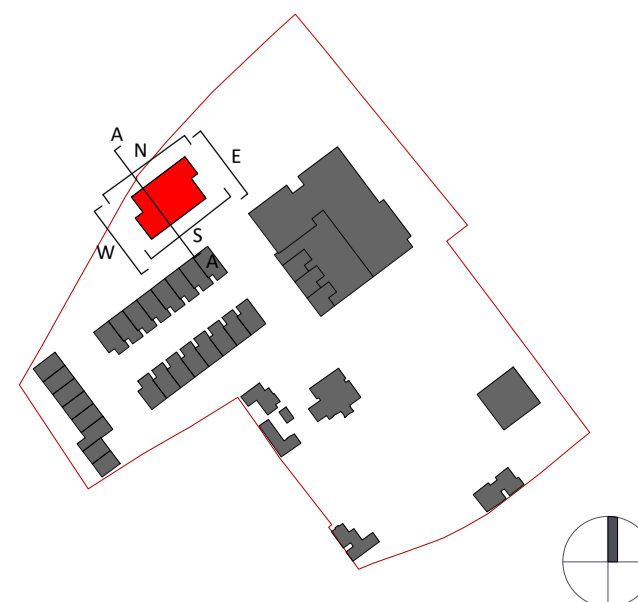
Ordnance Survey Ireland License CYALS0378517.

All levels (in meters) are related to Malin Head datum. All dimensions in millimeters. Figured dimensions only are to be taken from this drawing.

Please refer to landscape architects drawings for landscape proposals and boundary treatments.

Please refer to engineers drawings for road levels, site services and any other engineering proposals.

OS MAP REF:
3392-04 3392-03
3392-09 3392-08
ITM Centre Point Co-ordinate:
X,Y = 718425.68195, 728718.0075



Revision Description	Date	Rev. No.	Issued by
LRD Stage 2 Submission	07.06.2024	C02	SK
LRD Stage 3 Submission	23.10.2024	C03	SK

Any reference to fire safety design or performance is presented for coordination purposes only. Refer only to the granted Fire Safety Certificate, and fire consultant's information for fire safety design, specification and performance.
Figured dimensions only to be used. This drawing is copyright of O'Mahony Pike Architects Ltd. All information is shared as per approved use in accordance with ISO19650-2:2018, Table 5; Standard Codes for Suitability of Models and Documents and the BEP. If the 'Status' field is empty, this information has been shared at SO - WIP.

omahony pike

architecture | urban design
email: info@omahonypike.com
tel: +353 1 202 7400
fax: +353 1 283 0822
www.omahonypike.com

Dublin
The Chapel
Mount St. Anne's
Milltown, Dublin 6
D06 XNS2 Ireland

Cork
One South Mall
Cork City
Co. Cork
T12 CCN3 Ireland

Project Code: 1307G Scale @ A1: As indicated

Project Lead: SD Date: 23.10.2024

Drawn By: HC Revision: C03

Job No.: 1307G Status: A3

Purpose: LRD Stage 3 Submission

Project: Knockrabo Phase 2
Location: Mt. Anville Road, Dublin 14
Client: KIDAC

Drawing Title: Block G Elevations and Section

Drawing No.: 1307G-OMP-BG-ZZ-DR-A-2000

Source File: 1307G-OMP-ZZ-22-M3-A-0001.rvt